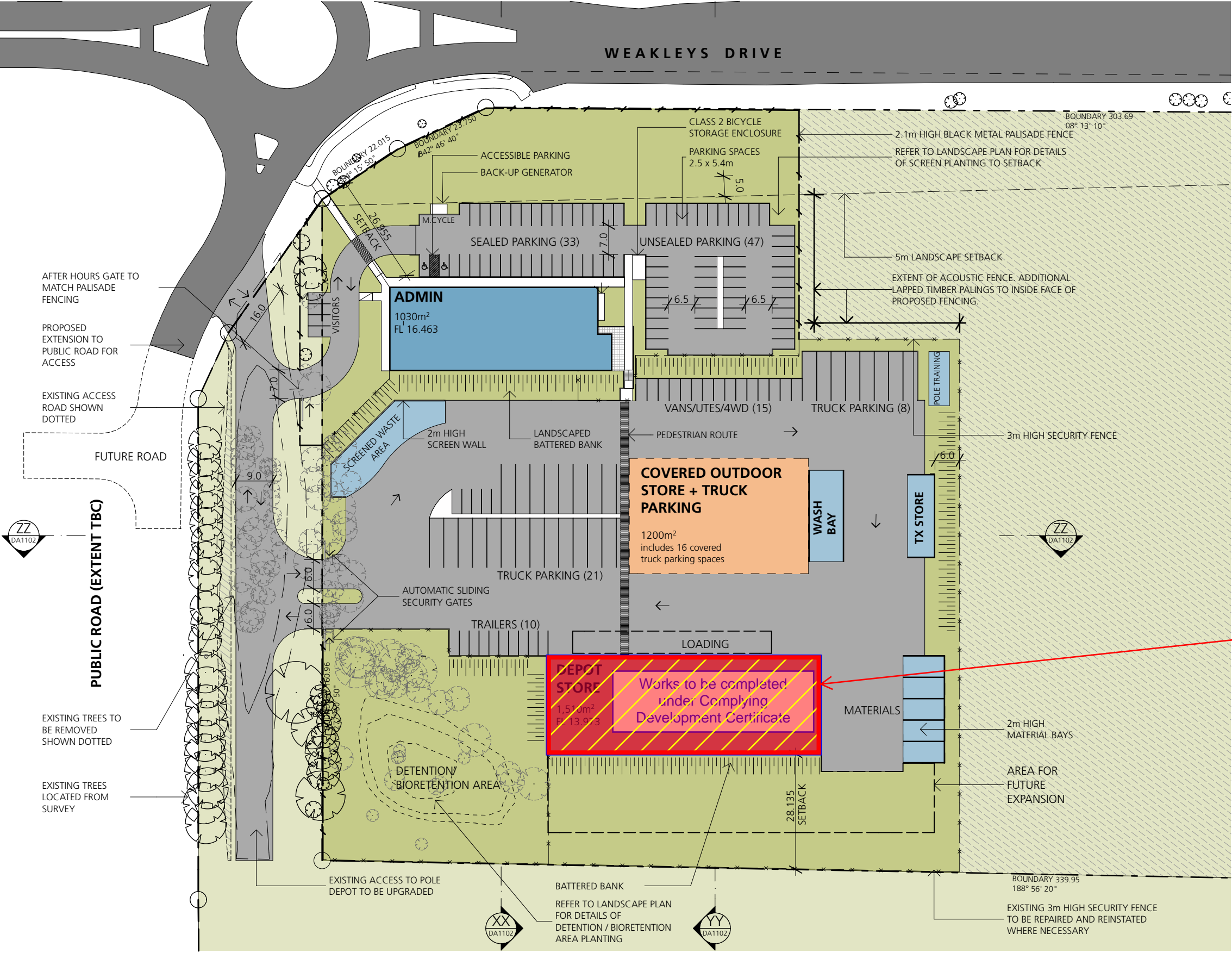


APPROVAL

1. Dimensions are in millimeters unless otherwise shown.

2. Work to given dimensions. Do not scale from drawing.
3. Check all dimensions on site prior to construction and fabrication.

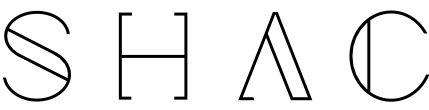
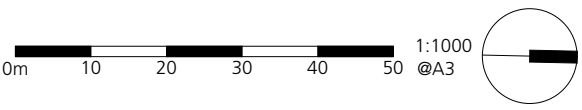
4. Bring any discrepancies to the attention of the proprietor & architect.



Depot is excluded from DA approval - separately addressed under a Complying Development Certificate

3654  
DA1101  
RevL 16.08.17

Site Plan  
Beresfield Depot  
53 Weakleys Drive, Beresfield

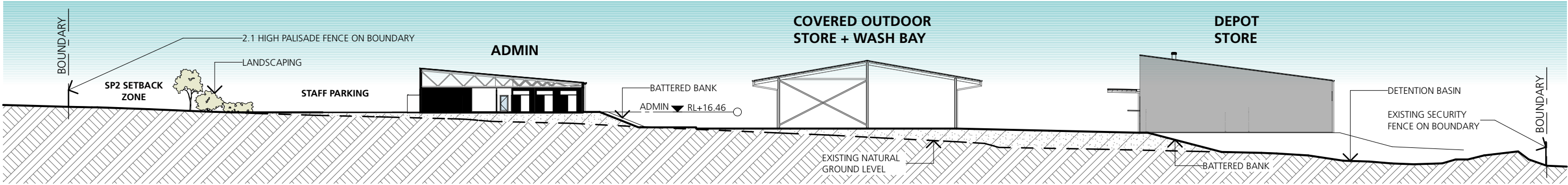


Nominated Architect Justin Hamilton (6160) | ABN 32 131 584 846

1. Dimensions are in millimeters unless otherwise shown.

2. Work to given dimensions. Do not scale from drawing.
3. Check all dimensions on site prior to construction and fabrication.

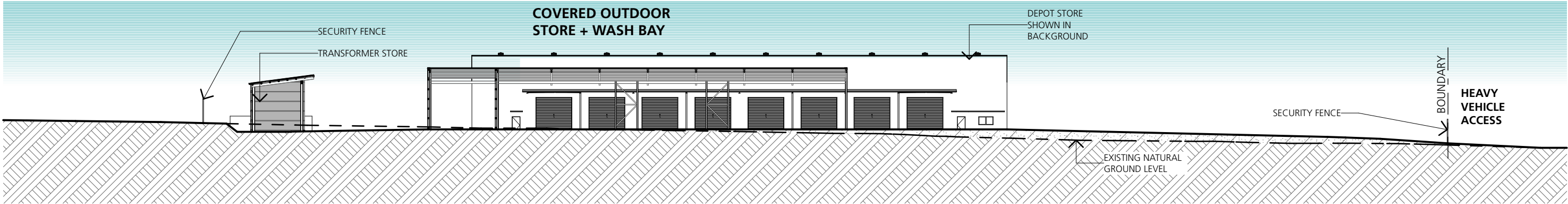
4. Bring any discrepancies to the attention of the proprietor & architect.



XX Site Section



YY Site Section



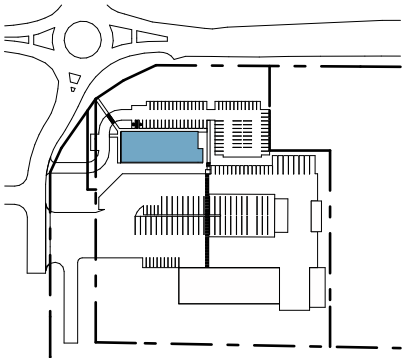
ZZ Site Section

APPROVAL

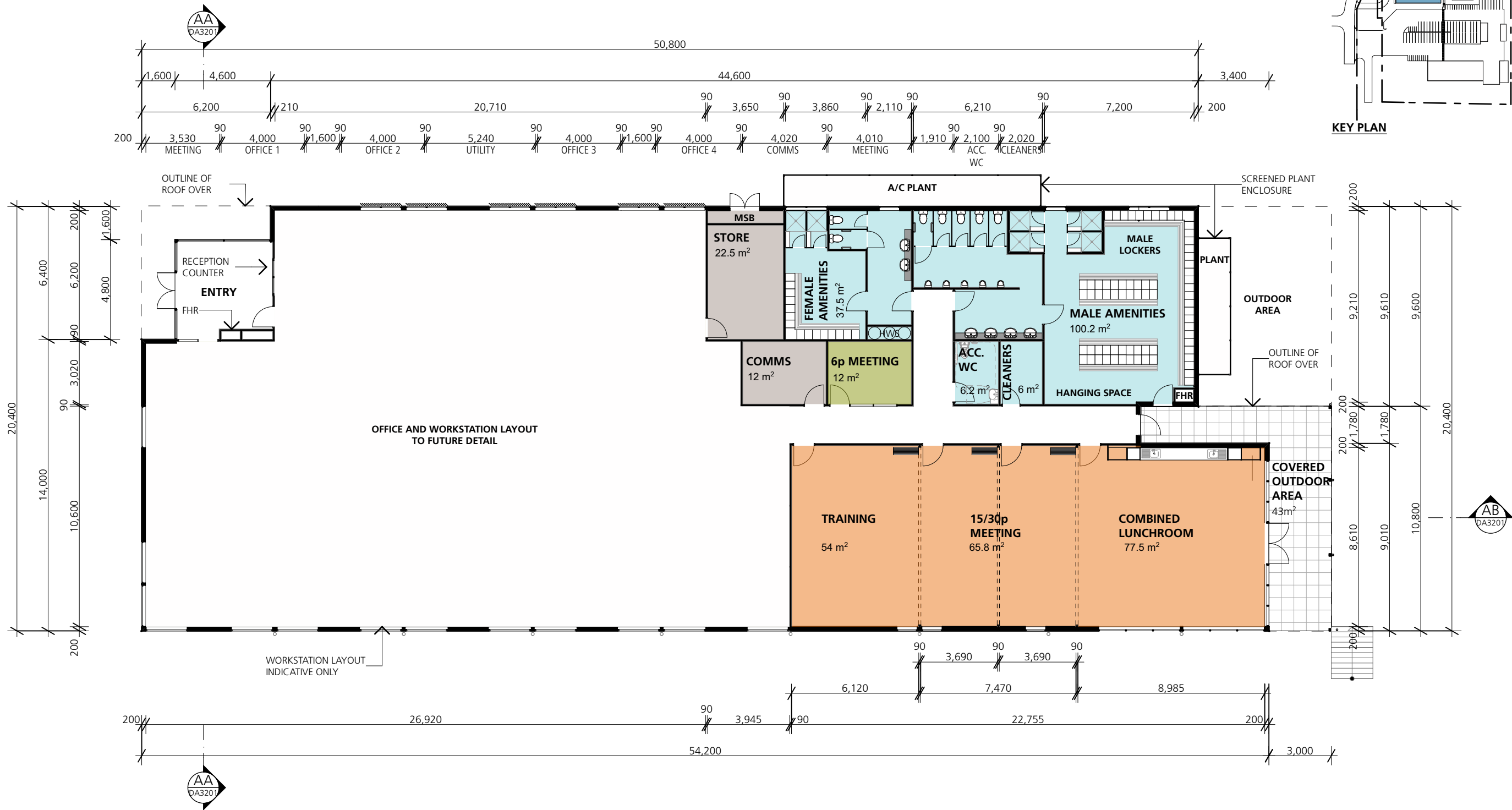
1. Dimensions are in millimeters unless otherwise shown.

2. Work to given dimensions. Do not scale from drawing.
3. Check all dimensions on site prior to construction and fabrication.

4. Bring any discrepancies to the attention of the proprietor & architect.



KEY PLAN



3654  
DA2200

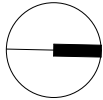
RevF 29.03.17

Admin Building - Ground Floor Plan

Beresfield Depot  
53 Weakleys Drive, Beresfield



0m 2 4 6 8 10 1:200 @A3



SHAC

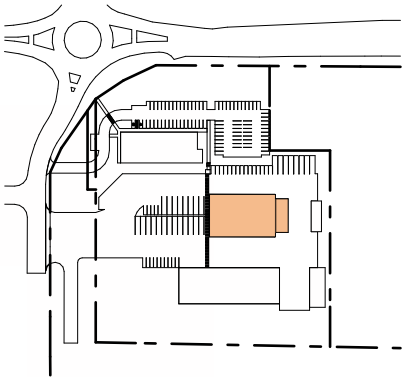
Nominated Architect Justin Hamilton (6160) | ABN 32 131 584 846

APPROVAL

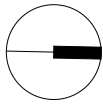
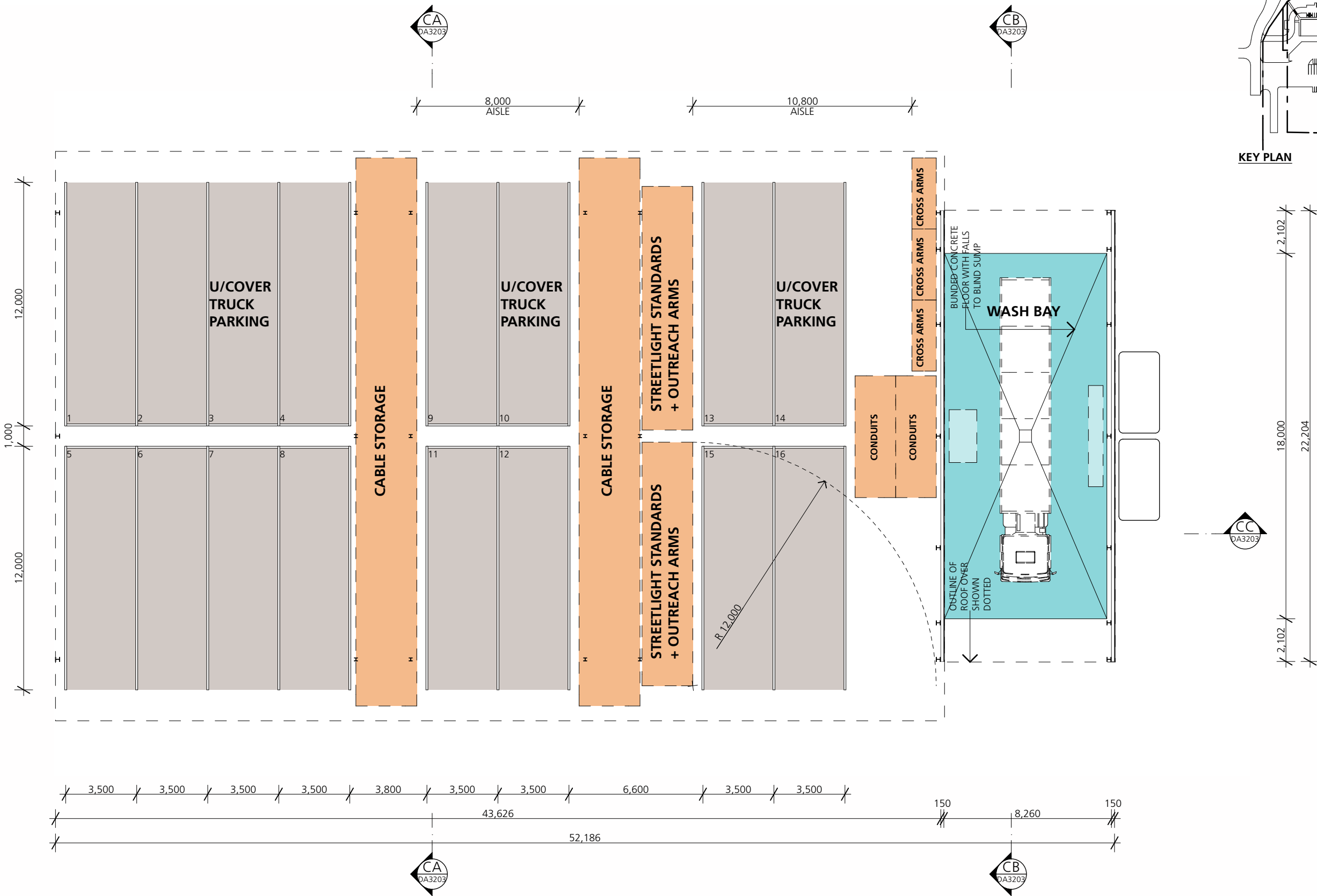
1. Dimensions are in millimeters unless otherwise shown.

2. Work to given dimensions. Do not scale from drawing.
3. Check all dimensions on site prior to construction and fabrication.

4. Bring any discrepancies to the attention of the proprietor & architect.



KEY PLAN

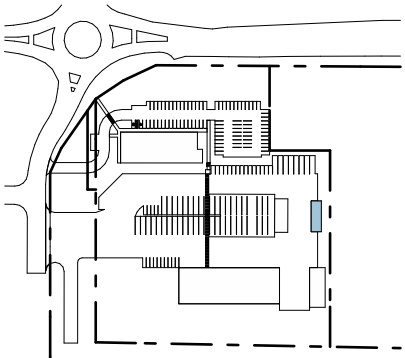


APPROVAL

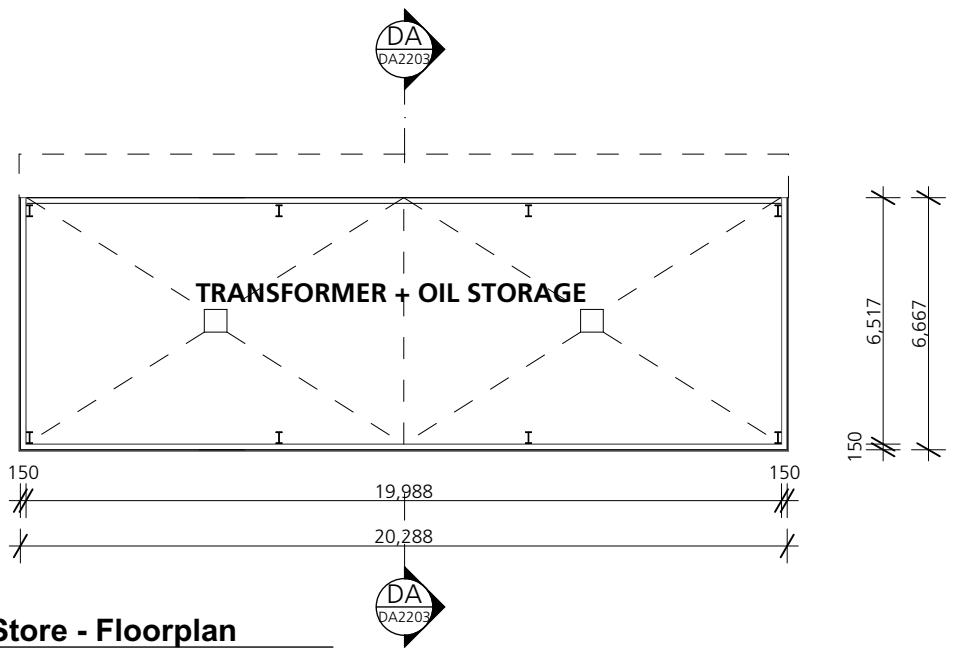
1. Dimensions are in millimeters unless otherwise shown.

2. Work to given dimensions. Do not scale from drawing.
3. Check all dimensions on site prior to construction and fabrication.

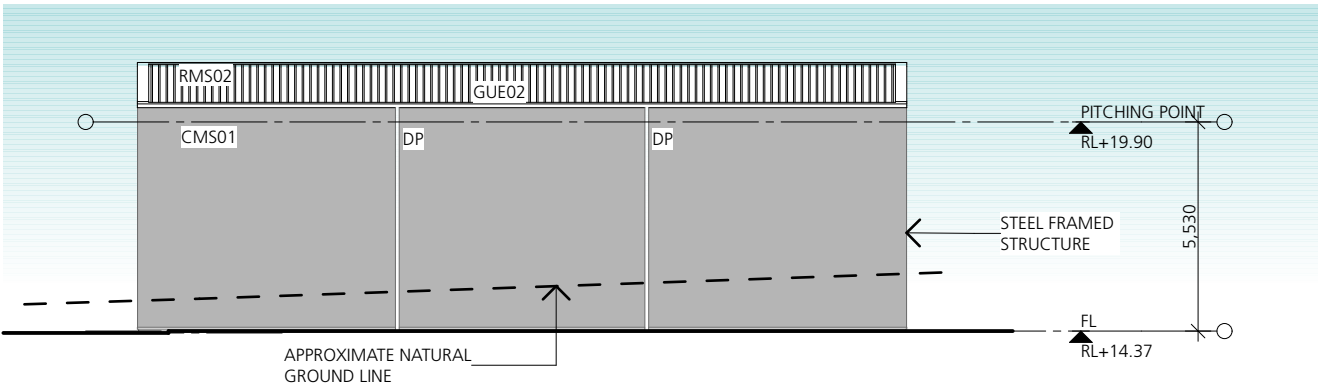
4. Bring any discrepancies to the attention of the proprietor & architect.



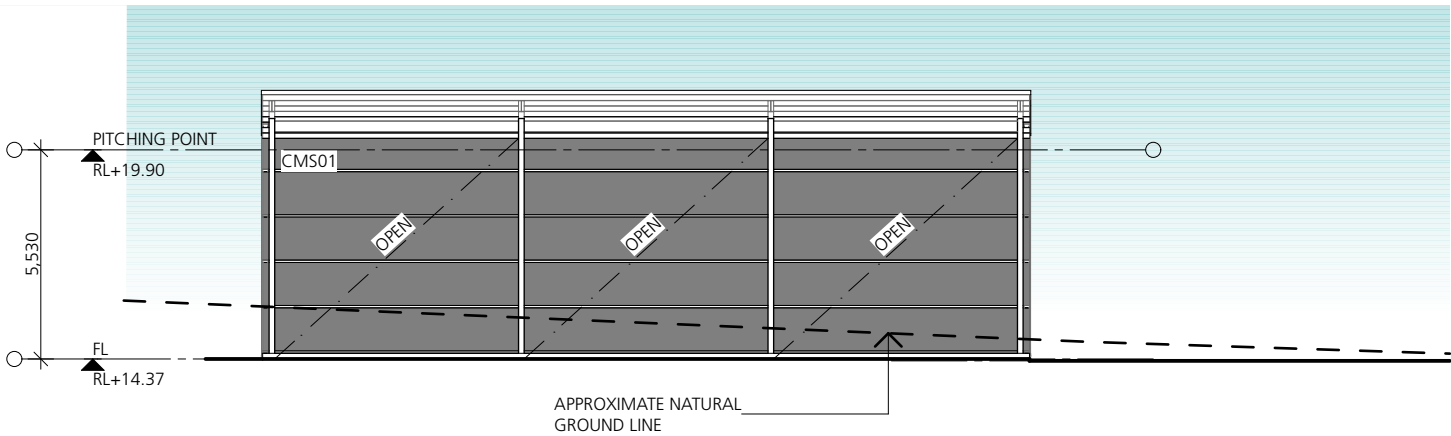
KEY PLAN



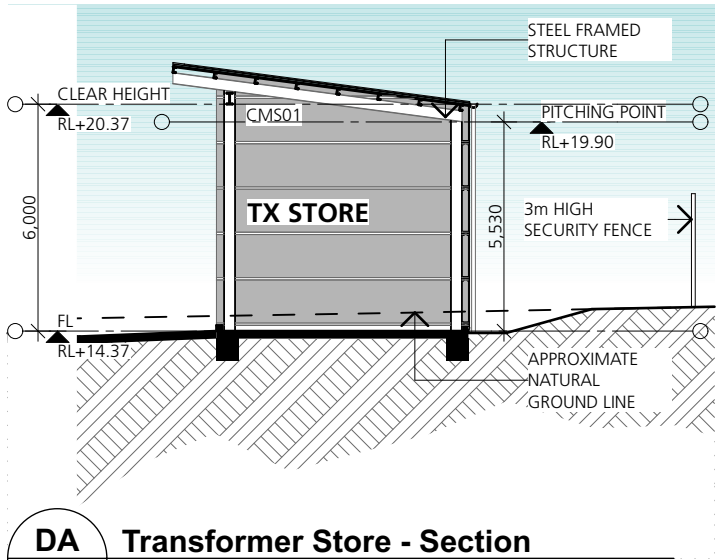
Transformers Store - Floorplan



Transformer Store - North Elevation



Transformer Store - South Elevation



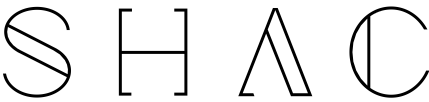
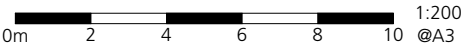
Transformer Store - Section

3654  
DA2203

RevB 29.03.17

Transformer Store

Beresfield Depot  
53 Weakleys Drive, Beresfield



Nominated Architect Justin Hamilton (6160) | ABN 32 131 584 846

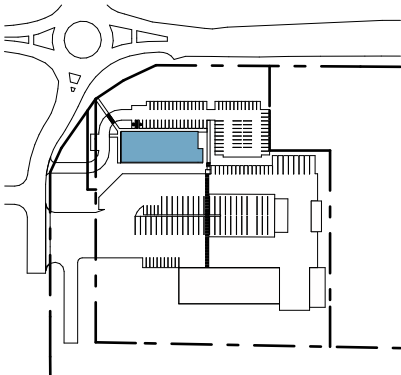
Drawing and design © SHAC Pty Ltd 2017. The signed control copy of this drawing is held by SHAC Pty Ltd. | Ref: #File Path date:30032017 time: 4:07 pm

APPROVAL

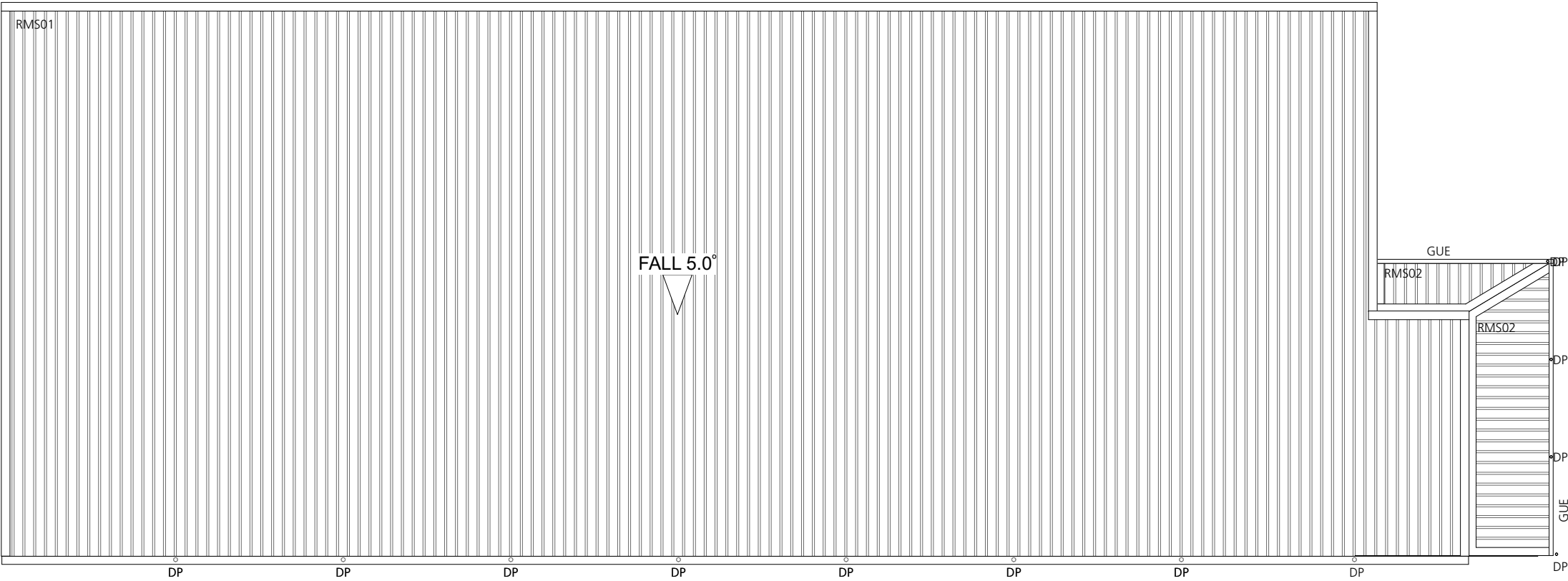
1. Dimensions are in millimeters unless otherwise shown.

2. Work to given dimensions. Do not scale from drawing.
3. Check all dimensions on site prior to construction and fabrication.

4. Bring any discrepancies to the attention of the proprietor & architect.



KEY PLAN

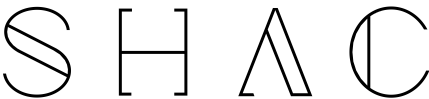
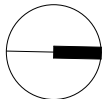


3654  
DA2400  
RevB 29.03.17

Admin Building - Roof Plan  
Beresfield Depot  
53 Weakleys Drive, Beresfield



0m 2 4 6 8 10 1:200 @A3



Nominated Architect Justin Hamilton (6160) | ABN 32 131 584 846

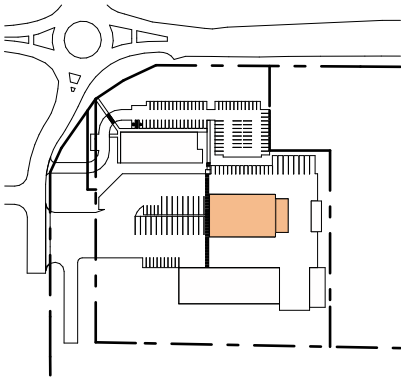


APPROVAL

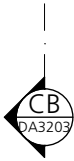
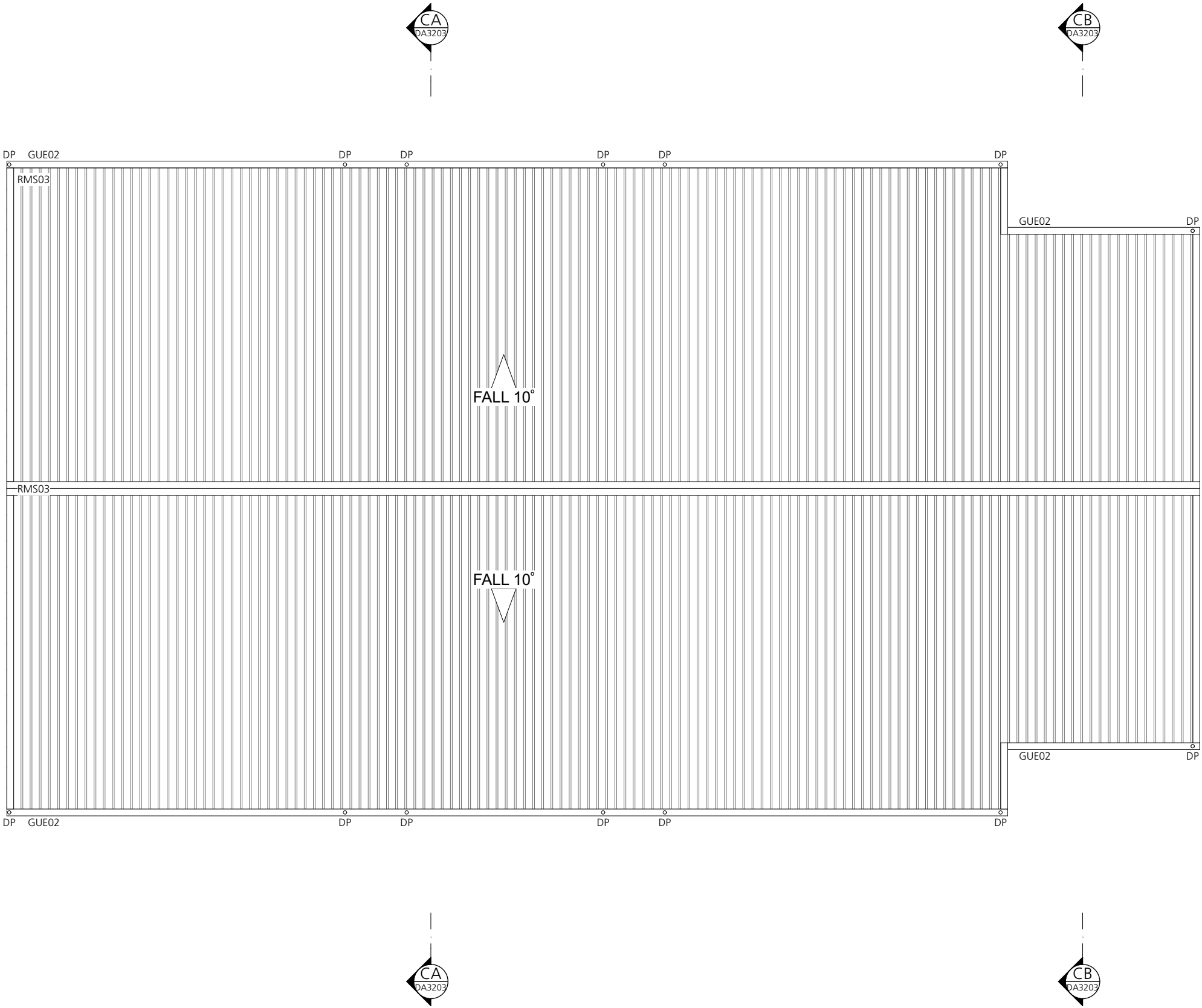
1. Dimensions are in millimeters unless otherwise shown.

2. Work to given dimensions. Do not scale from drawing.
3. Check all dimensions on site prior to construction and fabrication.

4. Bring any discrepancies to the attention of the proprietor & architect.



KEY PLAN

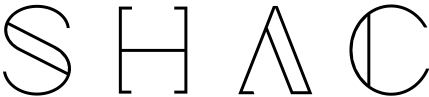
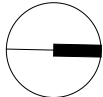


3654  
DA2402  
RevA 29.03.17

Covered Outdoor Store + Wash Bay - Roof  
Beresfield Depot  
53 Weakleys Drive, Beresfield



0m 2 4 6 8 10 1:200 @A3

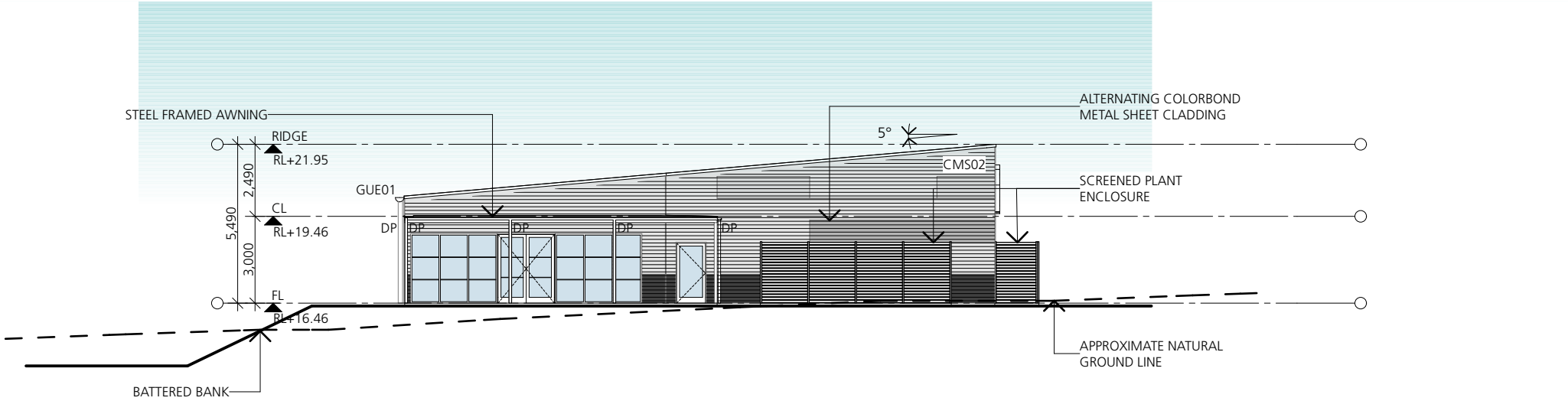


Nominated Architect Justin Hamilton (6160) | ABN 32 131 584 846

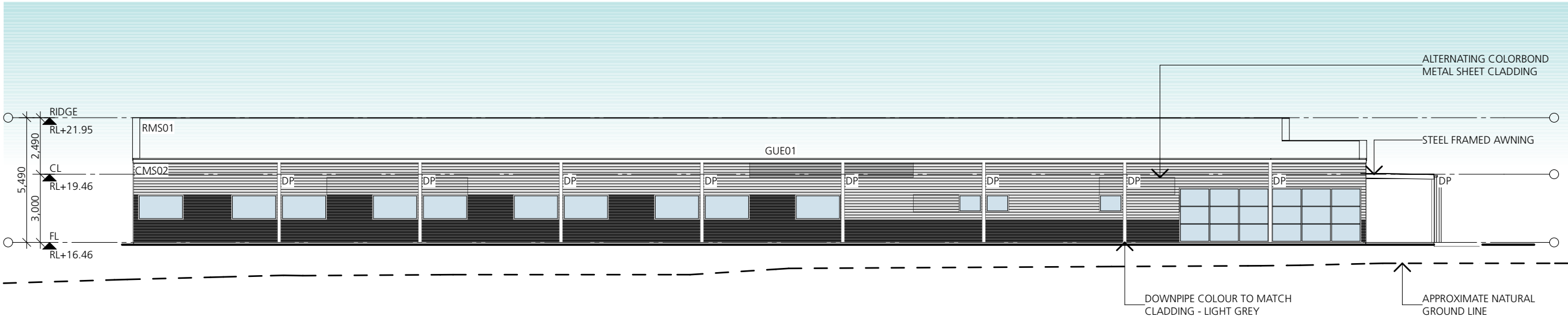
1. Dimensions are in millimeters unless otherwise shown.

2. Work to given dimensions. Do not scale from drawing.
3. Check all dimensions on site prior to construction and fabrication.

4. Bring any discrepancies to the attention of the proprietor & architect.



North Elevation



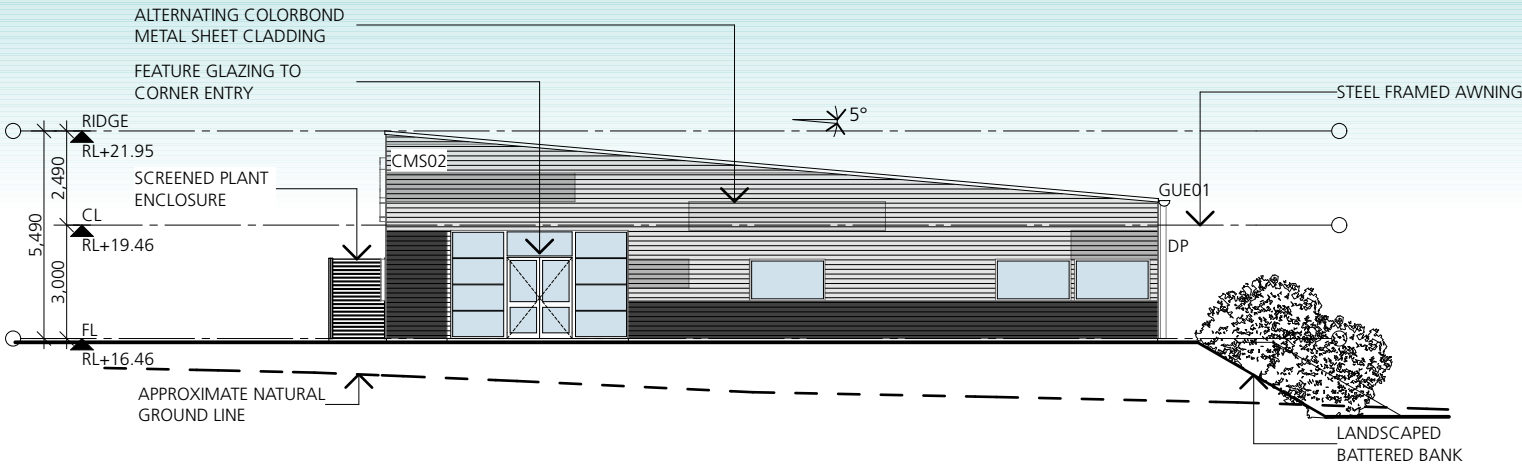
East Elevation



1. Dimensions are in millimeters unless otherwise shown.

2. Work to given dimensions. Do not scale from drawing.
3. Check all dimensions on site prior to construction and fabrication.

4. Bring any discrepancies to the attention of the proprietor & architect.



South Elevation

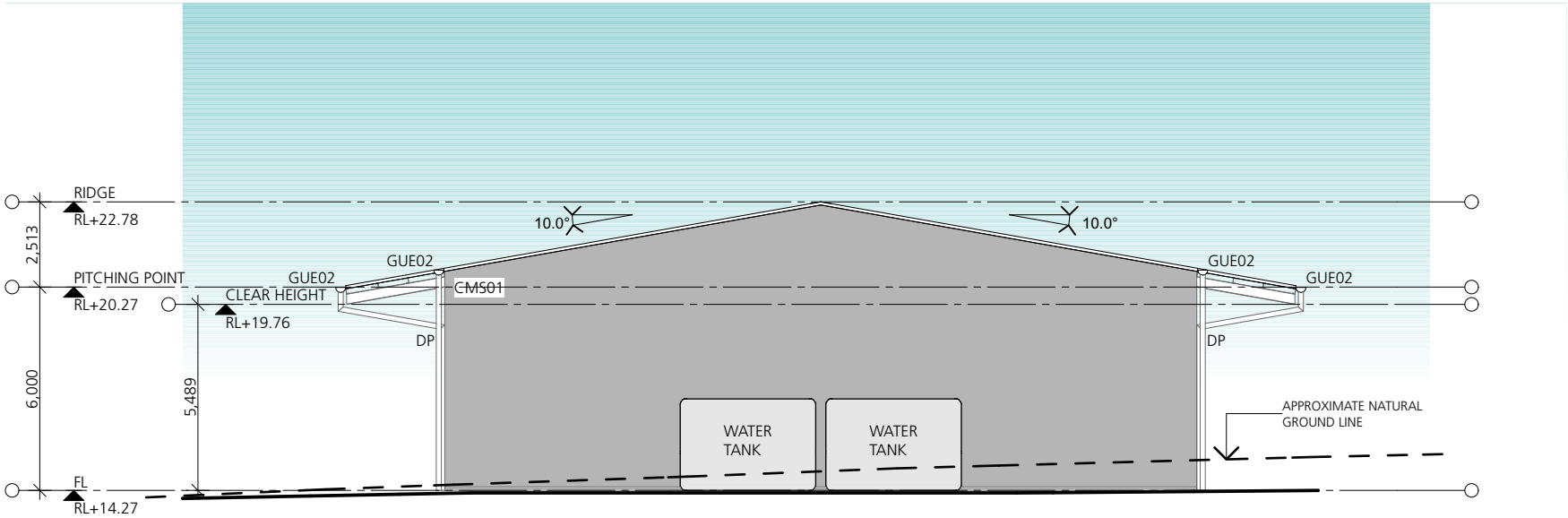


West Elevation

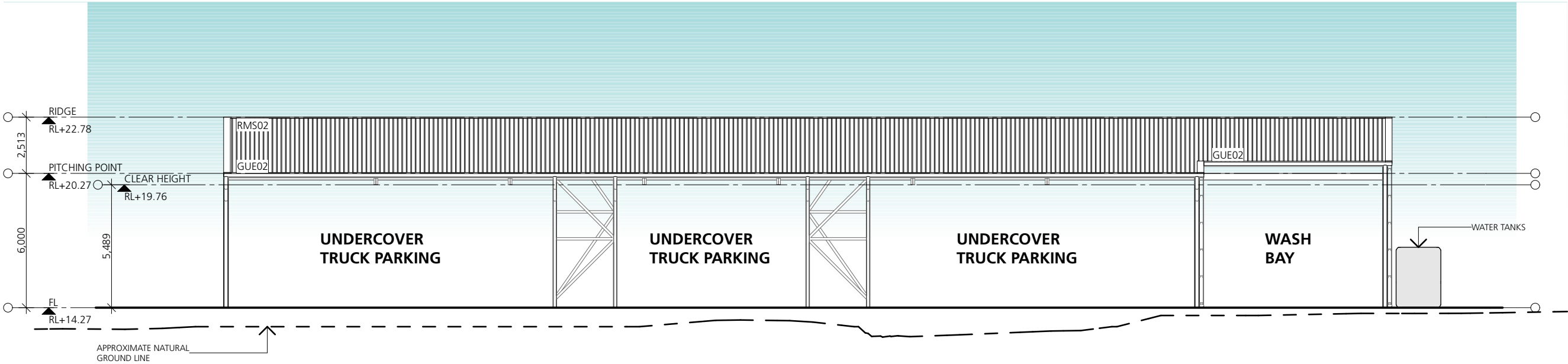
1. Dimensions are in millimeters unless otherwise shown.

2. Work to given dimensions. Do not scale from drawing.
3. Check all dimensions on site prior to construction and fabrication.

4. Bring any discrepancies to the attention of the proprietor & architect.



North Elevation

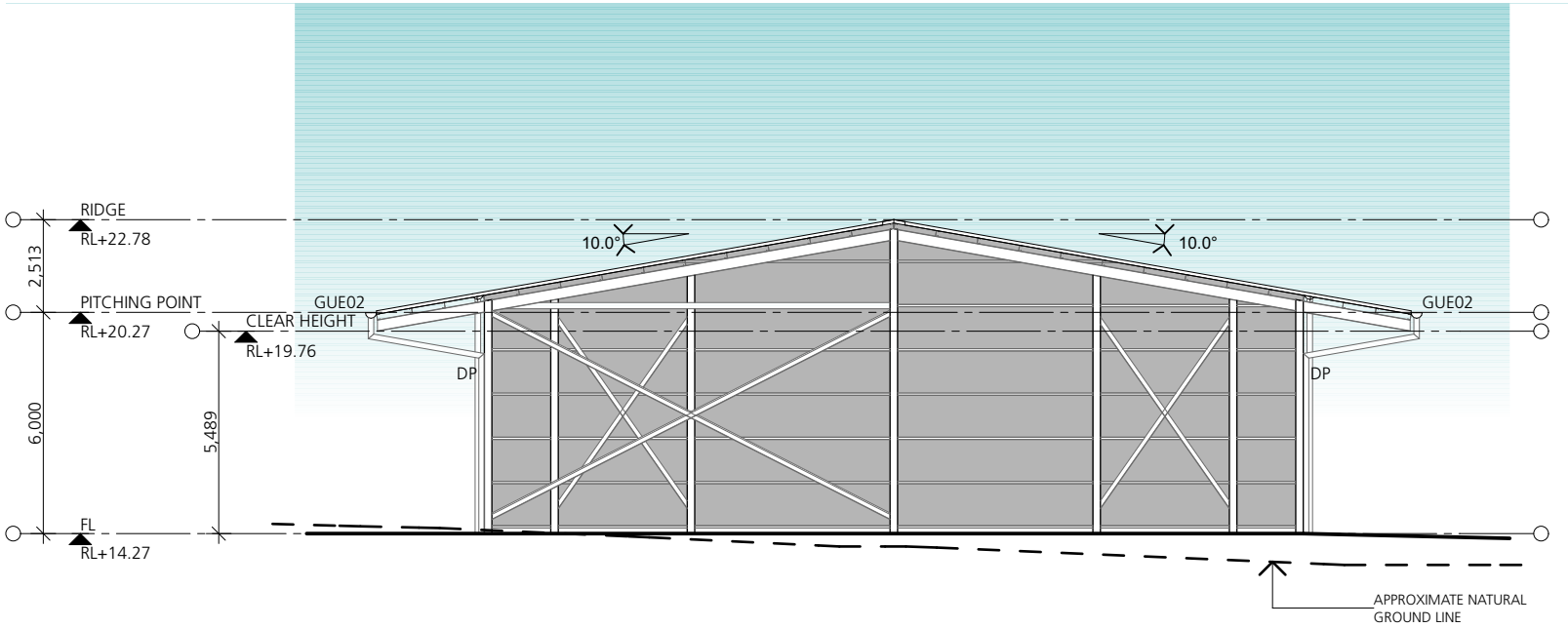


East Elevation

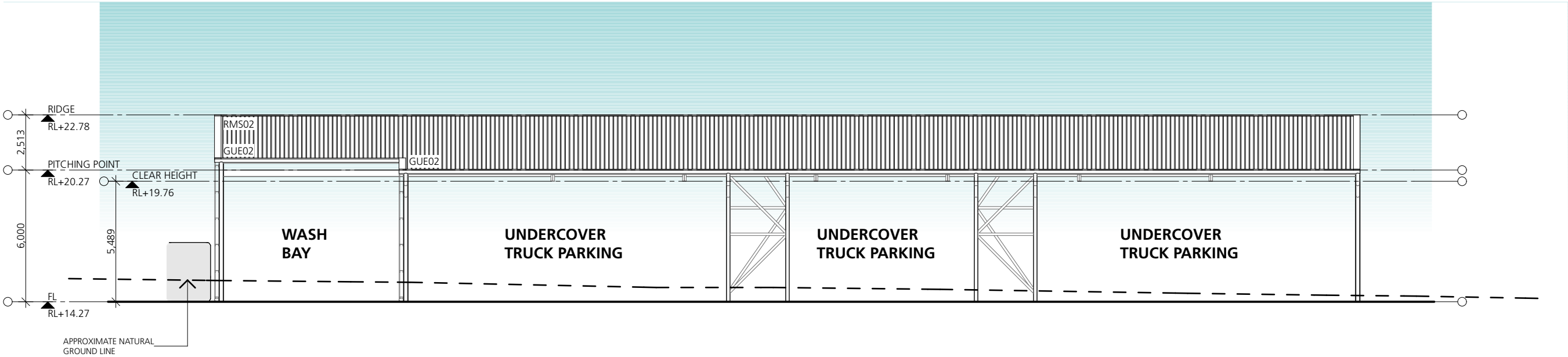
1. Dimensions are in millimeters unless otherwise shown.

2. Work to given dimensions. Do not scale from drawing.
3. Check all dimensions on site prior to construction and fabrication.

4. Bring any discrepancies to the attention of the proprietor & architect.



South Elevation



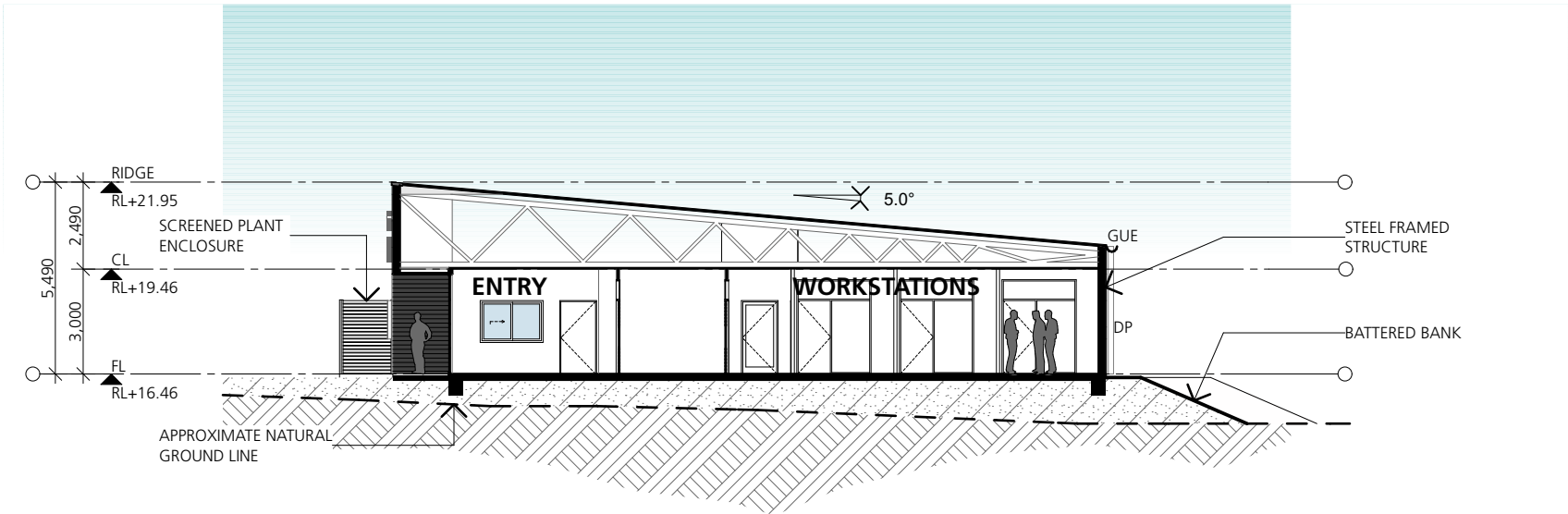
West Elevation

APPROVAL

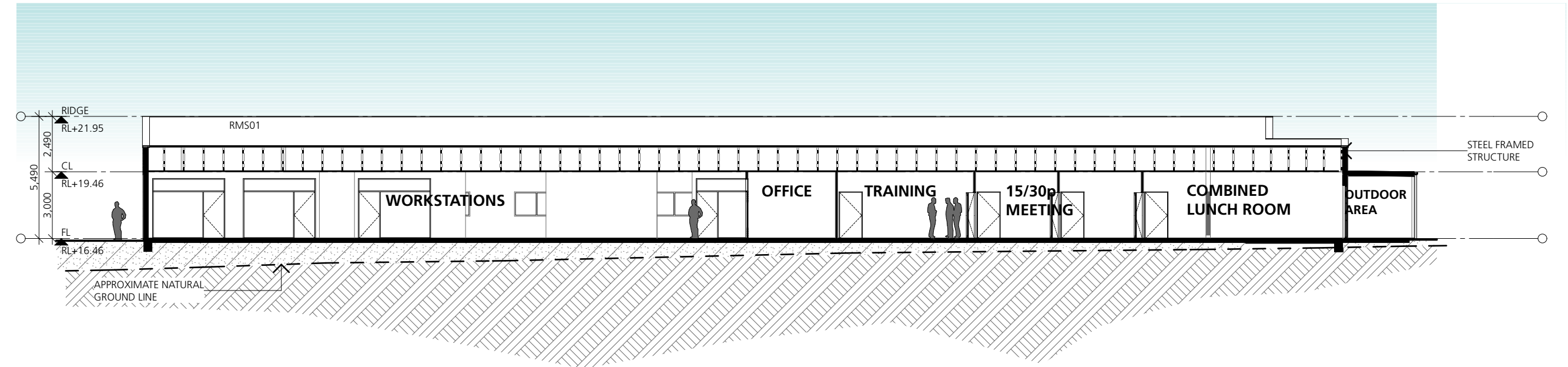
1. Dimensions are in millimeters unless otherwise shown.

2. Work to given dimensions. Do not scale from drawing.
3. Check all dimensions on site prior to construction and fabrication.

4. Bring any discrepancies to the attention of the proprietor & architect.



AA Administration Section



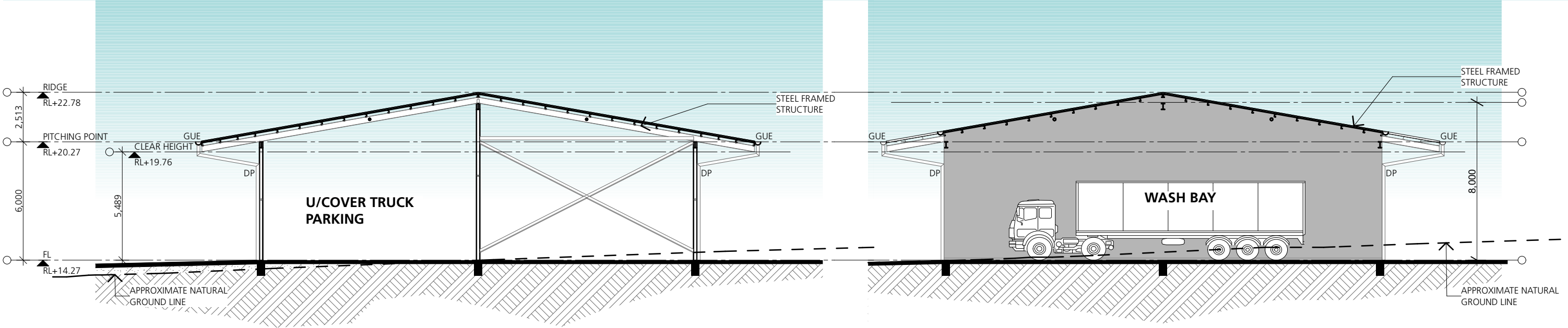
AB Administration Section

APPROVAL

1. Dimensions are in millimeters unless otherwise shown.

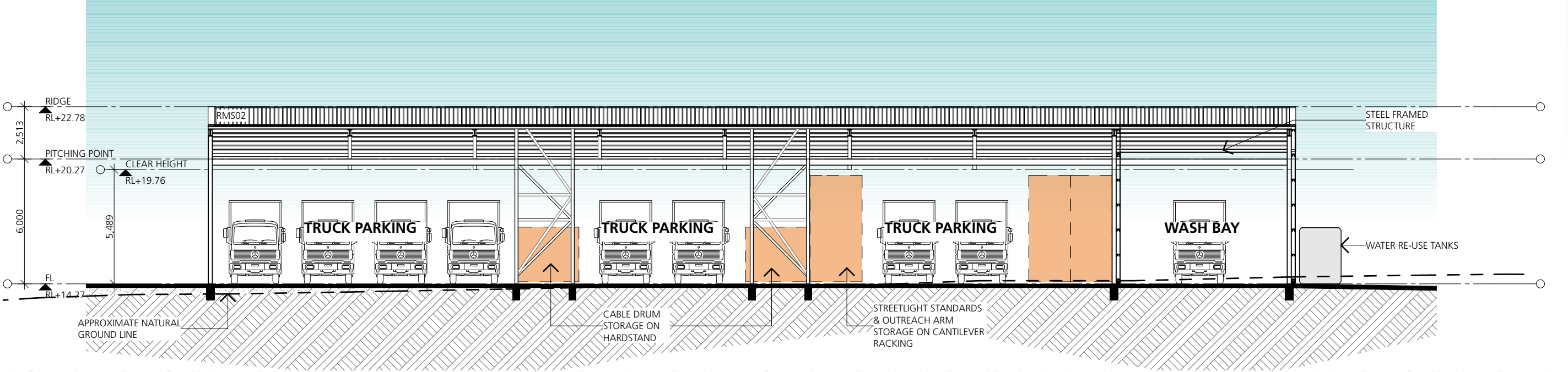
2. Work to given dimensions. Do not scale from drawing.
3. Check all dimensions on site prior to construction and fabrication.

4. Bring any discrepancies to the attention of the proprietor & architect.



CA Covered Outdoor Store + Wash Bay

CB Covered Outdoor Store + Wash Bay



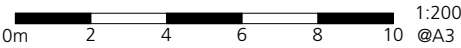
CC Covered Outdoor Store + Wash Bay

3654  
DA3203

RevA 29.03.17

Sections - Covered Store + Wash Bay

Beresfield Depot  
53 Weakleys Drive, Beresfield

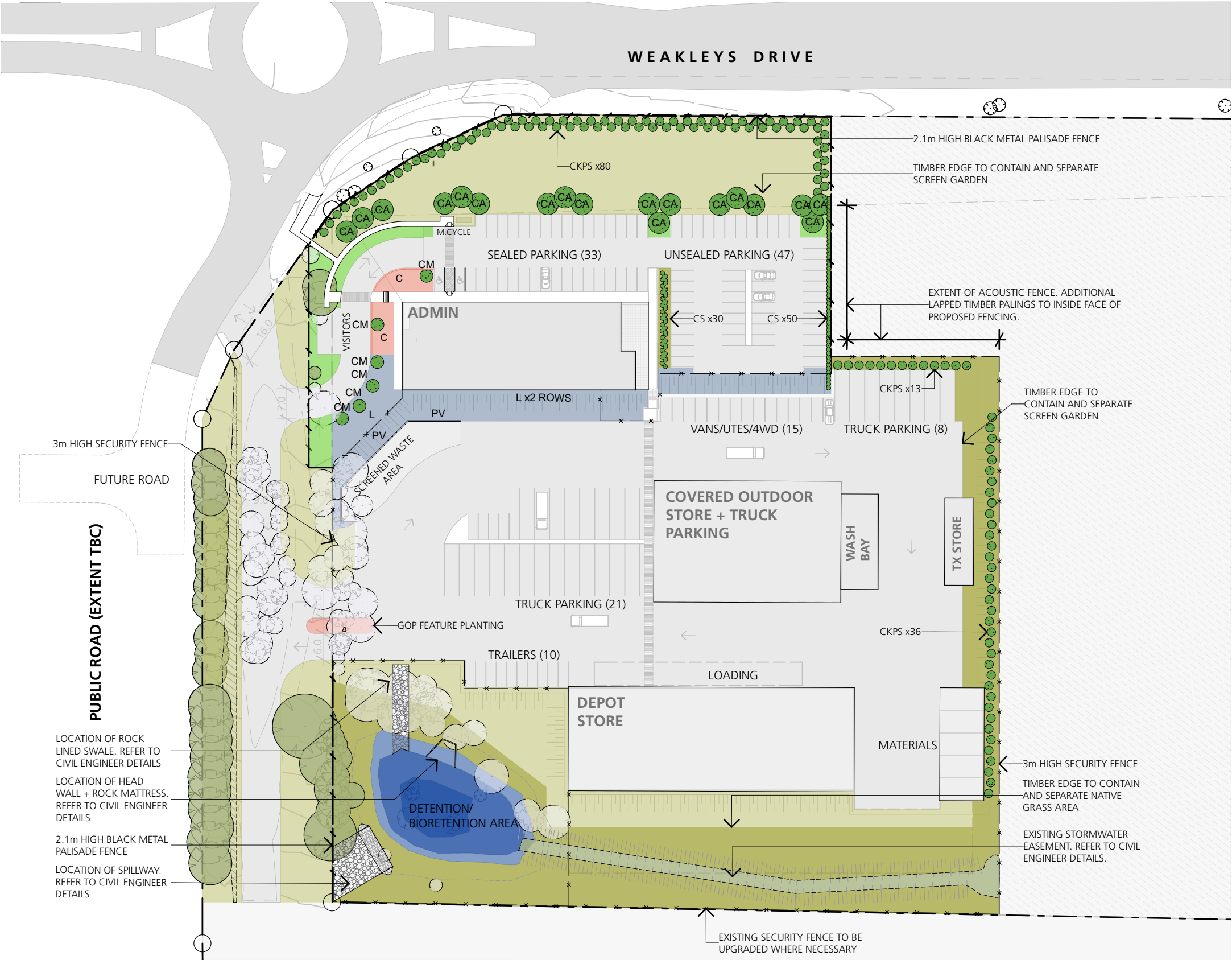











SHAC

Nominated Architect Justin Hamilton (6160) | ABN 32 131 584 846



Drawing and design © SHAC Pty Ltd 2017. The signed control copy of this drawing is held by SHAC Pty Ltd. | Ref: Volume/Projects/96002654 Beresfield Depot/500 CAD Graphics and Models/520 DA/6654 520.05.pln date:24/10/2017 time: 3:00 pm

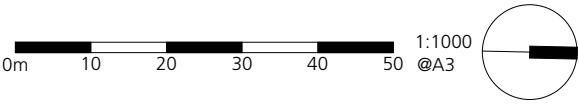


KEY:							
	EXISTING TREES TO BE REMOVED		CD NATIVE GRASS HYDROSEED MIX	6,249m <sup>2</sup>		C/O/GOP FEATURE PLANTING	186m <sup>2</sup>
	EXISTING TREES TO BE RETAINED		DL/PS/PP/LL NATIVE GRASS PLANTING	3,765m <sup>2</sup>		TURF	337m <sup>2</sup>
	PROPOSED TREES / SHRUBS - CKPS/CA/CM/CS		PV/L SHRUBS TO 1.5m	922m <sup>2</sup>		BIO-RETENTION PLANTING	829m <sup>2</sup>

LANDSCAPE DESIGNER: TERRA AQUA SUSTAINABLE SOLUTIONS,  
Ph. (02) 4967 1182

3654  
DA8001  
RevD 24.10.17

Landscape Plan  
Beresfield Depot  
53 Weakleys Drive, Beresfield

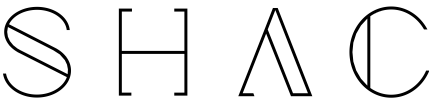


## APPROVAL

1. Dimensions are in millimeters unless otherwise shown.
2. Work to given dimensions. Do not scale from drawing.
3. Check all dimensions on site prior to construction and fabrication.
4. Bring any discrepancies to the attention of the proprietor & architect.

Ausgrid Beresfield Depot Species List REV 2

SYMBOL	BOTANICAL NAME	COMMON NAME	Height/Width	Pot Size	
<b>Screen Plantings Boundary / Car Park</b>					
CKPS Tree	<i>Callistemon Kings Park Special</i>	Red Bottlebrush	4m H x 2m W	5 litre	
CS	<i>Callistemon Slim</i>	Slim Bottlebrush	3m H x 1m W	5 litre	
<b>Admin / Light Veh. Entrance Plantings</b>					
CM Shrub / Tree	<i>Lagerstroemia indica x L. fauriei 'Tonto'</i>	Crepe Myrtle	3m H 3m W	5 Litre	
C	<i>Coprosma 'Pacific Sunset'</i>	Red Mirror Bush	1mH 1m W	5 litre	
O	<i>Ophiopogon Japonicus</i>	Mondo Grass	300mmH	140mm	
GOP	<i>Goodenia ovata Prostrate Form</i>	Goodenia Prostrate	<100mm H 50cm W	140mm	
<b>Car Park Trees</b>					
CA Tree	<i>Cupaniopsis anacardioides</i>	Tuckeroo	8m H 5m W	25 Litre	
<b>Admin/Unsealed Car Park Battered Embankments</b>					
<b>Shrubs / lilies</b>					
PV	<i>Pultenaea villosa</i>	Fuzzy Pea Bush	1.5m H 2m W	2.5 litre	
L	<i>Liriope 'Green Giant'</i>	Liriope	1m H 70cm W	140mm	
<b>Bioretention Swale Drain Areas</b>					
			If Viro Cells available use in place of tube stock		
BS	<i>Bursaria spinosa</i>	Blackthorn	3m H 2m W	Tube stock	
GO	<i>Goodenia ovata</i>	Hop Goodenia	1.2m H 2m W	Tube stock	
CA	<i>Carex appressa</i>	Tall Sedge	1mH 1m W	Tube stock	
FN	<i>Ficinia nodosa</i>	Knobby Club Rush	50cmH 50cm W	Tube stock	
JU	<i>Juncus usitatus</i>	Common Rush	70cmh 50cm W	Tube stock	
PL	<i>Poa labillardieri</i>	Tussock Grass	1m H 50cm W	Tube stock	
<b>Turf Species</b>					
CD	<i>Cynodon dactylon</i>	Native couch	Seed 35 kg per hectare.	35 Kg	Hydroseed Mix
K	<i>Pennisetum clandestinum</i>	Kikuyu	20-40mm H	m2	
<b>Native Grasses for Bioretention Area / Batters</b>			4 tubes to m/sq	Plant in species clusters	
DL	<i>Danthonia linkii</i>	Wallaby Grass	50cm H 50cm W	Virocell or small tube stock	
PS	<i>Poa sieberiana</i>	Snow Grass	70cm H 50cm W	Virocell or small tube stock	
PP	<i>Poa poliformis</i>	Poa	60cm H 50cm W	Virocell or small tube stock	
LL	<i>Lomandra longifolia</i>	Matt Rush	1mH 1m W	Virocell or small tube stock	
<b>Bio-retention Pond Planting</b>					
BA	<i>Baumea articulata</i>	Jointed Twig Rush	2m H >70cm W	Tube stock	
BF	<i>Bolboschoenus fluviatus</i>	Marsh club Rush	2m H >70cm W	Tube stock	
ES	<i>Eleocharis sphacelata</i>	Tall Spike Rush	2m H 5m W	Tube stock	
SL	<i>Schoenoplectus littoralis</i>	Shore Club Rush	<1m H 50cm W	Tube stock	
SV	<i>Schoenoplectus validus</i>	River Club Rush	<1m H 50cm W	Tube stock	



Nominated Architect Justin Hamilton (6160) | ABN 32 131 584 846